

SPECIFICATION DOCUMENT

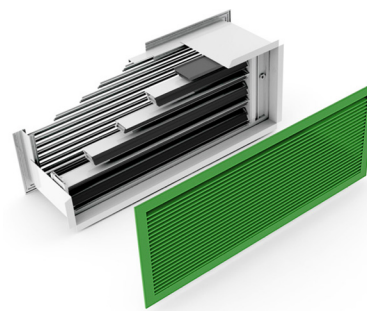
Ventive Purge (Wall Installation)



Product Description

Ventive Purge Wall Ventilator units are a range of controllable ventilators primarily for installation in external facades in commercial buildings. The electrically-actuated ventilators provide controlled air intake and extract in natural (passive) ventilation systems, and may also be used for air intake or extract in mechanical ventilation systems.

They are particularly suitable for night cooling strategies, where daytime heat build-up is dissipated from the structure during the night.



Construction Details

External Louvres: Frame and weather louvres are extruded aluminum, powder coated to standard RAL 7016 with 4mm black polypropylene insect screen. Other RAL colours are available on request

Internal louvre: Double skin aluminum louvre blades with ABS thermal break and blade compression seals. Actuator provided with terminal block and removable aluminum cover for ease of maintenance. Actuators can be mounted on either left or right hand side of the louvre viewed from internal side. Right hand side is standard.

Wall Sleeve: Through the cavity wall, constructed of aluminum sheet to suit wall depth.

Cover Grille: Frame and blades are extruded aluminum and supplied to RAL9016 gloss (white). Other RAL colours are available on request. Fixings and cover caps supplied.

Performance Data

Materials used for internal frame and louvres when closed achieve a Class 1 rating when tested to BS 476: Part 7:1987. Weatherability rating to BS5368: Part 2 – 1000 Pascals.

External louvres provide 98.6% rain rejection when independently tested at BSRIA using the BS EN 13030:2001. Tested to BS 6375: Part 1: 1989 the closed ventilators provide an air leakage of 9.7m³/hour/m² at 50 Pa pressure. 0.54m³/hour/m² at a more realistic operating pressure of 2 Pa.

Appraised under BS EN ISO 9001.

All Ventive Purge louvres have a Cd Value Inflow of 0.42 and Outflow of 0.44 (with internal cover grille).

All Ventive Purge louvres have a U-value of 0.86W/m²K when closed in the vertical position (wall mounted).

Available Sizes

Heights of 255 up to 1490mm (structural opening size). Lengths of 400 up to 2300mm (structural opening size).

Minimum wall depth 195mm with internal cover grille and 185mm without grille.

Actuator Type (supplied with product)

24V Modulating (0-10V signal).

Options

Dummy (non-operating) and double banked fixed weather louvre versions are available.

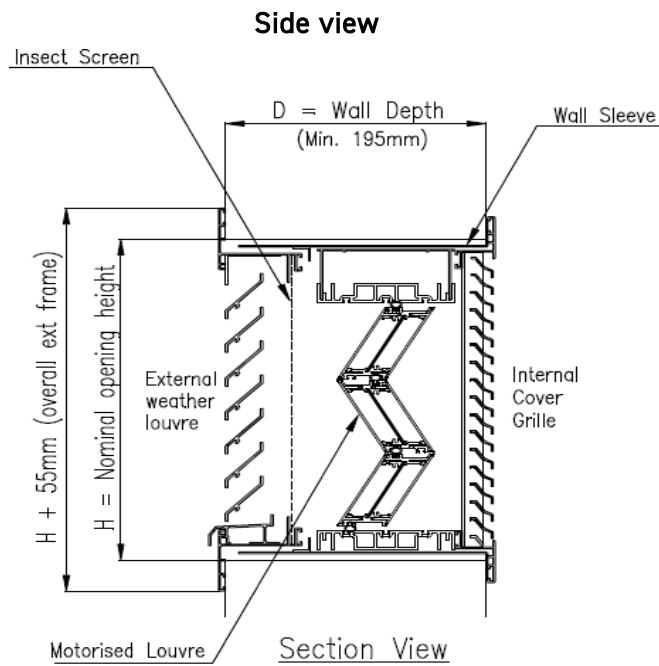
External weather louvres can be provided with additional support mullions to resist vandal attack. Acoustic versions available.

Thermal Ventive Purge option available as inlet louvres.

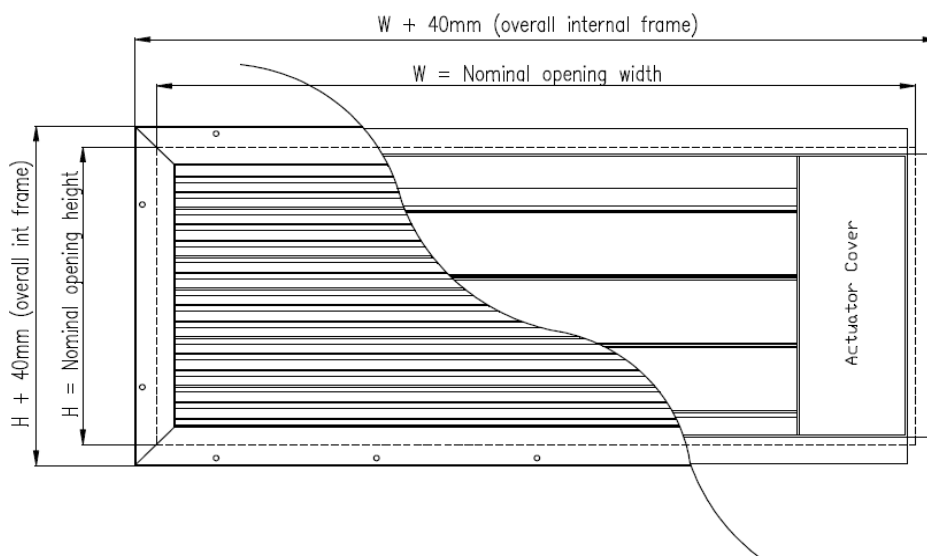
Cover Grille Options

One way, egg crate grille and heavy duty.

Technical Drawing



**Front View
(wall opening shown dotted)**



Ventive maintains a policy of continuous development and reserves the right to amend product specifications without notice.