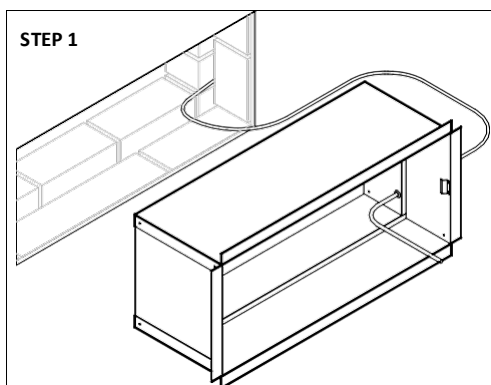


FIXING INSTRUCTIONS

Ventive Purge (Wall Installation)

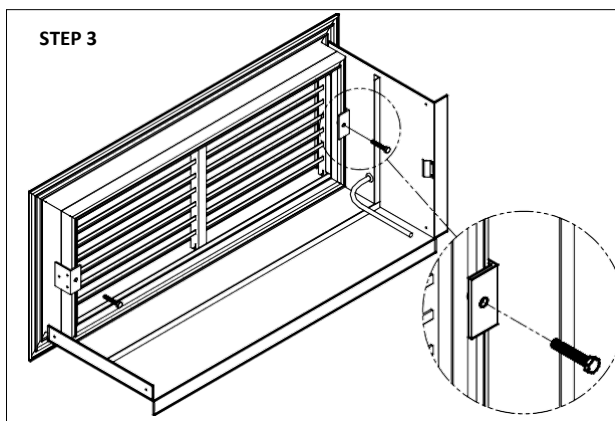
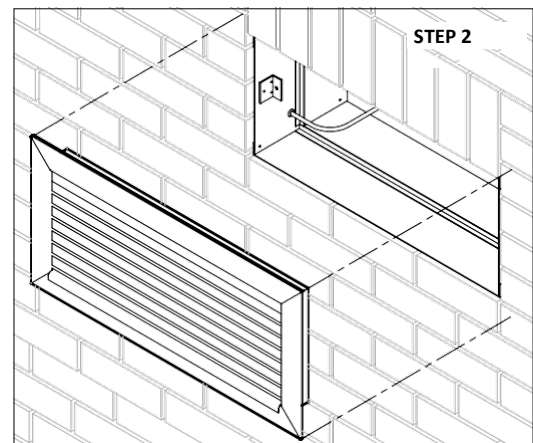
BEFORE COMMENCING INSTALLATION, ENSURE THAT THE LINTEL IS PROTECTED WITH A CAVITY TRAY WITH END STOPS

The Ventive Purge unit is supplied disassembled for ease of installation. The dimensions of the prepared structural opening for the Ventive Purge unit should be that quoted on drawings / quotations +5mm / -5mm. Check the diagonal dimensions to ensure the structural opening is square. Ventive Purge is supplied pre-assembled but must be disassembled prior to installation. Remove the internal louvre assembly, angle frame and acoustic cassette. It is the electrical contractor / installer's responsibility to ensure that the correct earth bonding is carried out if necessary. Detach the sleeve from the external louvre assembly by unscrewing the fixing screws connecting the two components. Retain the screws for later use.



STEP 1. From the inside of the building, feed the power supply through one of the rubber grommets at either end of the wall sleeve. Enough cable should be left to allow connection to the junction box inside the actuator housing on the louvre unit. Insert the wall sleeve into the wall ensuring that the unit is the correct way up. Dependent on the size of the structural opening, it may be necessary to pack the sleeve to ensure it is positioned centrally within the structural opening.

STEP 2. Moving to the outside of the building, apply silicon sealant to the back of the wall frame flange and insert the external louvre assembly into the aluminum sleeve. From inside the building ensure that the structural openings on the internal side of the frame align with the brackets on the sleeve.

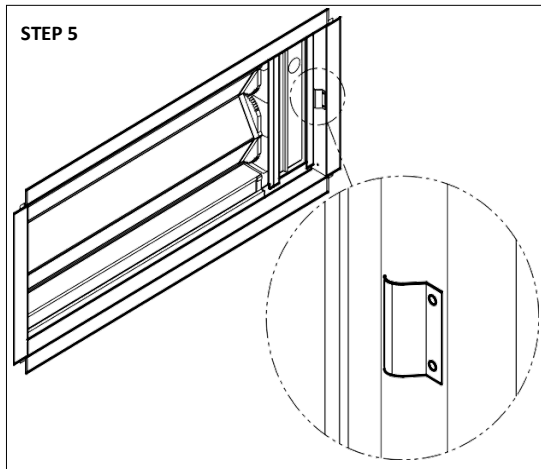
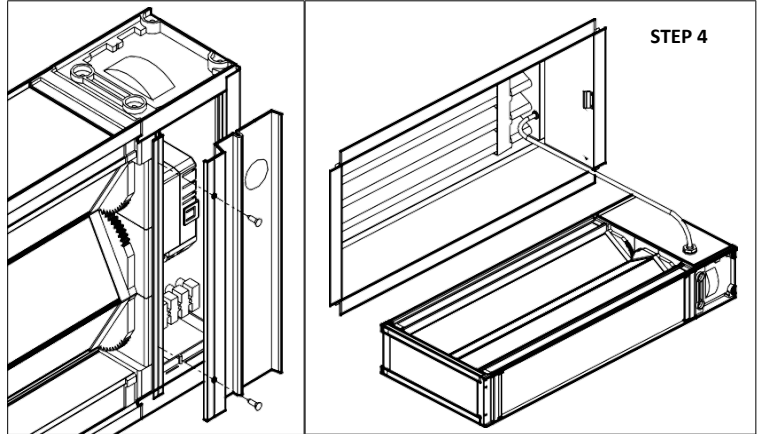


STEP 3. When the structural openings have been correctly aligned, secure the external louvre assembly to the wall sleeve with the fixings retained from earlier. Ensure that the fixings are fully tightened. The unit will now be fixed into the wall.

(Continued on page 2)

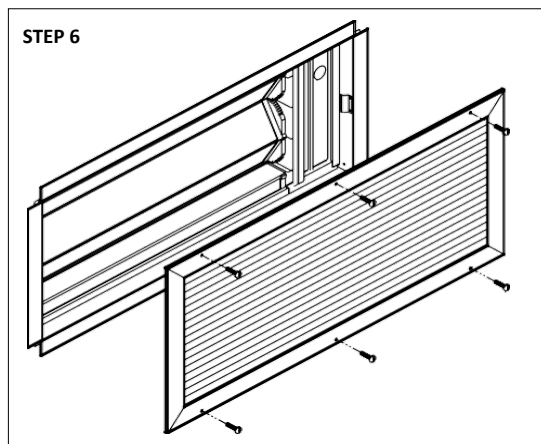
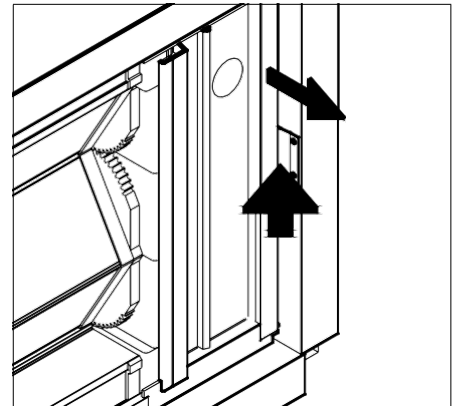
(Continued from page 1)

STEP 4. Remove the actuator cover from the front of the internal louvre by removing the screws. Feed the cable through the grommet at the rear of the internal louvre, pulling the cable through the front of the actuator housing.



STEP 5. Once the cable has been pulled through the grommet and actuator housing, insert the inner louvre assembly into the wall sleeve ensuring that it is the correct way up. Note: Sprung retaining clips are pre-fitted to either side of the wall sleeve which deflect towards the sleeve wall when the louvre is inserted. Push the inner louvre assembly into the sleeve until the clips spring back out to retain the front of the assembly. Coil the cable up and place it in the actuator housing or wire into the junction box within the actuator housing. Wiring must be carried out to the wiring diagram supplied. Replace the actuator front cover and fasten fixing screws. It is the responsibility of the electrical contractor / installer to ensure correct earth bonding is carried out if required.

Should it be necessary to remove the louvre assembly for maintenance etc, depress the clips on either side whilst pulling the assembly out.



STEP 6. Insert the internal cover grille onto the aluminum sleeve. Once in place, secure with fixing screws provided.

NOTE: Fixing points may alter from those shown.

WARNING
ISOLATE POWER SUPPLY BEFORE COMMENCING ANY MAINTENANCE WORK.

FOR FURTHER INFORMATION ON ALL VENTIVE PRODUCTS PLEASE CONTACT US.